



RMCC Conference Championships

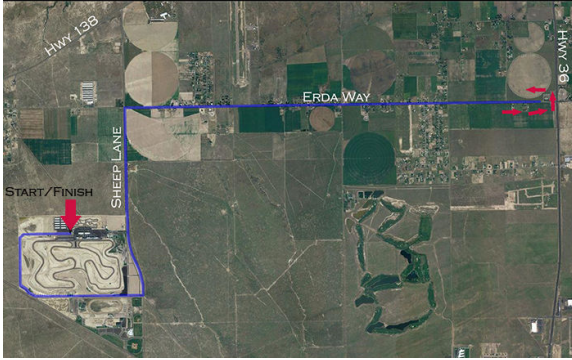


Hosted by the University of Utah

<http://www.utahcycling.org/> for more info - USAC# 2009-356

Miller Motorsports Park Time Trial – Saturday, April 25:

Directions and course: Miller Motor Sports Park at 2901 Sheep Lane, Tooele, Utah 84074. Take I-80 West of SLC about 30 minutes. Turn-off on exit 99 (hwy 36) and travel 3.2 miles to hwy 138. Turn right on hwy 138 and continue 4.8 miles. Turn left on Sheep Lane, enter the park on the right at the main entrance. Course is 15.5 miles, flat around the park perimeter road and nearby rural roads. Out and back, start/finish in the paddock area. Teams will start at 1 minute intervals.



Category	Start Time
Men C	9:15 AM
Men B	Immediately following
Women All	Immediately following
Men A	Immediately following

DMV Crit – Saturday, April 25:

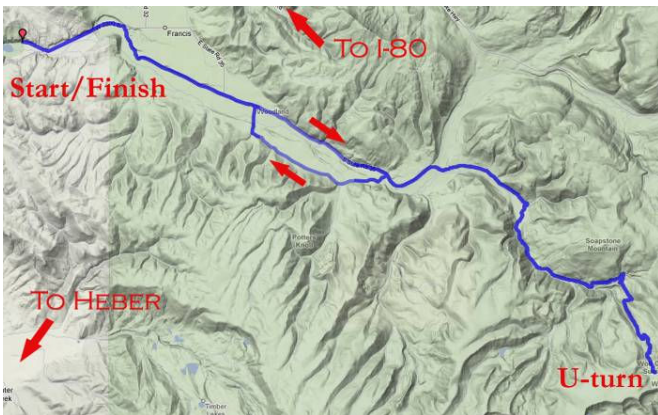
Course: DMV Crit at 2780 W. 4700 S. SLC, UT 84118. From TTT, take I-80 to exit #117 to I-215 South. Take I-215 going South for 6.5 miles and take Exit #15 (4700 S.) going West. DMV is just past the light on the right. Course is a 1/4 mile course with start/finish at the top of a short, steep hill.

Category	Start Time	Length
Men C	3:30 PM	25 min + 15 min clinic
Women B	4:20 PM	25 min + 15 min clinic
Men B	5:10 PM	45 min
Women A	6:05 PM	45 min
Men A	7:00 PM	60 min



Road Race – Sunday, April 26:

Directions/Course: Wolf Creek Canyon. Take I-80 East from SLC 20 miles to Exit 145. Take SR-40/189 South 12 mi. to SR-32. Take SR-32 East (left at the light) to the Rock Cliff State Park, left into Rock Cliff State Park. Course starts at Rock Cliff and heads up to the Woodland Valley. Riders will ride laps in the valley based on race category before heading up Wolf Creek Pass with a u-turn at the top, finish at Rock Cliff State Park. Women B and Men C don't do the large climb.



Category	Start Time	Distance
Men A	8:30 AM	72 miles - 3 laps
Men B	8:40 AM	55 miles - 1 lap
Women A	8:50 AM	55 miles - 1 lap
Men C	9:00 AM	31 miles - 2 laps
Women B	9:10 AM	31 miles - 2 laps

Registration: Before each event, registration closes 30 minutes prior to start of event. Entry fees are \$20 per event with maximum of \$50 for all 3 events.

RMCCC Lunch: Lunch will be served for all racers Saturday mid-day at Miller Motorsports Park.

Accommodations: Host housing is available, contact David Welsh welshd@law.utah.edu. Ideal hotel location would be close to I-80, East of I-15.

Contact: Contact Brad Duncan at bradleeduncan@gmail.com for more information or questions.